

Ordering information

Model Number	Description
LRDUO	Includes LinkRunner Duo, Wireview Cable ID #1, LinkRunner Connect Software CD, USB cable, RJ45 coupler, LinkRunner Duo getting started guide, four (4) AA alkaline batteries
LRDUO-FTK	Includes LRDUO, SimpliFiber Pro optical power meter, 850/1300 multimode source, VisiFault VFL, FT120 FiberViewer, FindFiber Remote ID source, and carrying case; SC, ST, and LC power meter adapters
LRPRO-1000	LinkRunner Pro Network Multimeter
LRPRO-KIT	LinkRunner Pro Extended Test Kit (see image below for contents)
CIQ-GSV	CableIQ Gigabit Service Kit (see image below for contents)
CIQ-GSV-IE	CableIQ Gigabit Service Kit – Industrial Ethernet includes: CableIQ Qualification Tester, LinkRunner Pro Network Multimeter, IntelliTone Pro 200 Probe, CableIQ Remote Identifiers #1-7, WireView Cable ID #1, CableIQ Reporter software CD, RJ45-RJ45 shielded patch cords (2), USB cable, coax “F” push-on cable, RJ45/RJ11 universal coupler, USB cable, test accessory soft pouch, CableIQ Getting Started Guide, LinkRunner Pro Getting Started Guide, IntelliTone Pro Getting Started Guide, eight (8) AA batteries, one 9 V battery, packaged in a deluxe Fluke Networks carry case and (2) RJ45-to-M12 patch cables
Accessories	Description
MS-SX	Gig Fiber SFP transceiver (Not included in Duo. SFP required for fiber testing on Duo)
LRPRO-REFLECT-OPT	Reflector option
LRPRO-LION	Lithium-Ion Battery Pack with AC adapter
WIREVIEW 2-6	WireView Cable IDs #2-6
CLIP-SET	RJ45 to 8-clip test lead
CIQ-RJA	RJ45/11 Modular Adapter
MT-8200-63A	IntelliTone 200 Probe

LinkRunner Family Comparison

Features	LinkRunner	LinkRunner Pro & Duo
Link/Ping Speed	10/100	10/100/1000
POTS/ISDN/Ethernet Detection	•	•
Cable Wiremap	•	•
Discovery Protocols	CDP/EDP	CDP/EDP/LLDP
IntelliTone Digital Toning		•
PoE Verification		•
Configurable Ping List		10 IP Addresses
802.1X Authentication		•
Link Status Reports		4 reports on Pro 8 reports on Duo
USB Application Port		•
Protective Rubber Mold		•



LinkRunner Duo



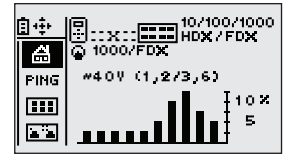
LinkRunner Pro



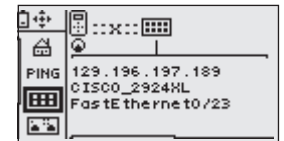
CableIQ Gigabit Service Kit



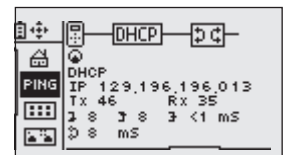
LinkRunner Pro Extended Test Kit



See device capabilities, link speed, PoE power, and utilization levels.



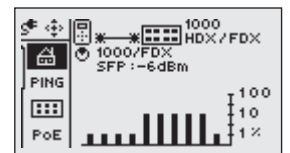
Precisely locate switch ports with CDP, EDP, and LLDP discovery.



Ping DNS server or other key devices, and observe response time.



Quickly authenticate and identify potential 802.1X security conflicts.



Provides indication of link on active fiber link and indication of power based on manufacturer's SFP specifications.



Specifications

Media Access	10BASE-T, 100BASE-TX, 1000BASE-T (IEEE 802.3), and PoE (IEEE 802.3af)
Cable Tests	Pair lengths, opens, shorts, splits, crossed, straight through, and cable ID
Tone Generator	IntelliTone digital tone: [500 KHz]; analog tones: [400Hz, 1KHz]
Ports	Test ports: RJ45 ports; Application port: mini-USB
Power Source	4 AA batteries
Weight	10 oz (311 grams) with batteries installed
Dimensions	5.3" h x 3.1" w x 1.3" d (13.46cm x 7.87cm x 3.30cm)
LinkRunner Connect Software	Operates on Windows XP and 2000; supports English, Spanish, French, German, Simplified Chinese, and Japanese
Warranty	One year
M12/ RJ45 Cable Specifications:	
Cable type	Ethernet cable, Cat5e, shielded, 2 pair AWG 26 stranded (7 wire), RAL 5021 (water blue), M12 4 pos. D- coded on RJ45 connector
Number of positions	4
Fixed cable length	2 m
Volume resistance	$\leq 5 \text{ m}\Omega$
Insulation resistance	$\geq 100 \text{ M}\Omega$
Ambient temperature	-20 °C to 50 °C
Inflammability class acc to UL 94	V0
Surge voltage category	II
Pollution degree	3
Degree of protection	IP20/IP67
External cable diameter	6.7 mm
Transmission characteristics	Cat 5 (IEC 11801:2002), Cat 5e (TIA 568B:2001)

For more information, visit www.flukenetworks.com/linkrunnerpro

NETWORK SUPERVISION

Fluke Networks
P.O. Box 777, Everett, WA USA 98206-0777

Fluke Networks operates in more than 50 countries worldwide. To find your local office contact details, go to www.flukenetworks.com/contact.

©2009 Fluke Corporation. All rights reserved.
Printed in U.S.A. 5/2009 2798532 D-ENG-N Rev C